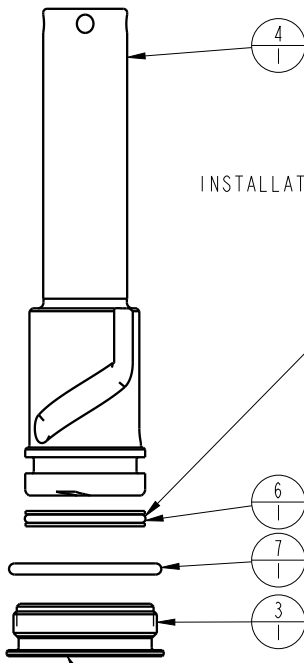
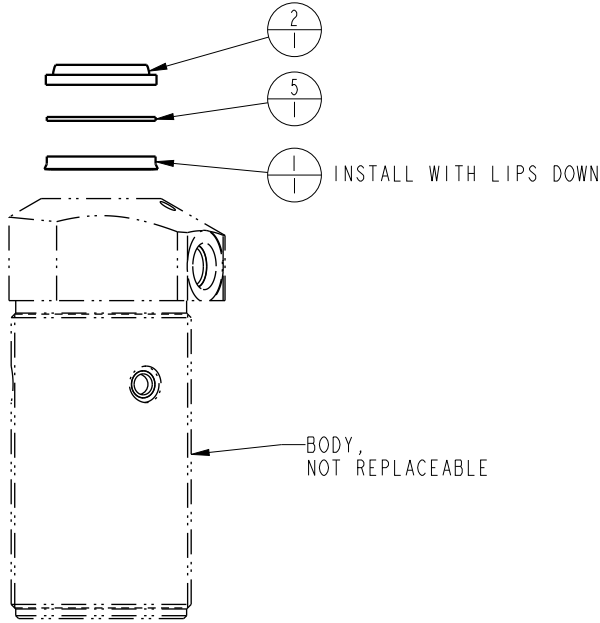
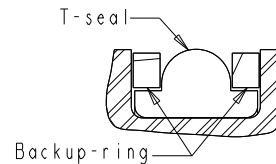


LUBRICATE ALL SEALS WITH CLEAN HYDRAULIC OIL PRIOR TO ASSEMBLY. DO NOT USE SILICONE BASED LUBRICANTS.



T-SEAL INSTALLATION INFO

3 piece seal Assemble with T-seal between backup rings.



TIGHTEN TO 30 FT-LBS TORQUE.

N/A	N/A	6V250210	KIT, SEAL, FKM	N/A	NOTED
N/A	N/A	60250210	KIT, SEAL, STANDARD	NOTED	N/A
7	1	39V51043	O-RING, (-918)	X	39V51043
6	1	39H11030	SEAL, T, (1 1/16X5/32X1 1/4)	X	39V11030
5	1	39F54002	BU RING, (-212 CUSTOM)	X	39F54002
4	1	81511301	PLUNGER, SC, 2600#		
3	1	81400030	RETAINER, SC, HS, 2600		
2	1	39053000	WIPER, SNAP-IN, (7/8)	X	39053000
1	1	39011046	SEAL, BEVEL W/HEEL INSERT, 7/8 x 1/8 x 1 1/8	X	39V11046
No.	QTY	PART No.	DESCRIPTION	STANDARD SEAL KIT	FKM SEAL KIT

PARTS LIST



VEKTEK, INC.
1334 E. SIXTH AVE. P.O. BOX 625
EMPORIA, KS. 66801 U.S.A.

ASSEMBLIES AFFECTED
25021312
25021312F

PARTS LIST, ASSY, CYL, PP, TB, 6100/3100

SIZE A PL2518

REV B

SHEET 1 OF 1

B	5814	RELEASE	JDW	09/19/25
REV	IN ACCORDANCE WITH ECN	EFFECTIVE DATE	REVISED BY	DATE
DRW BY: NPETERS	DRAWING STATUS: Released			
DATE: 5/13/21	PRODUCTION APPROVED FOR RELEASED STATUS ONLY			

FORM FEG035_PL_ASIZE, REV. B